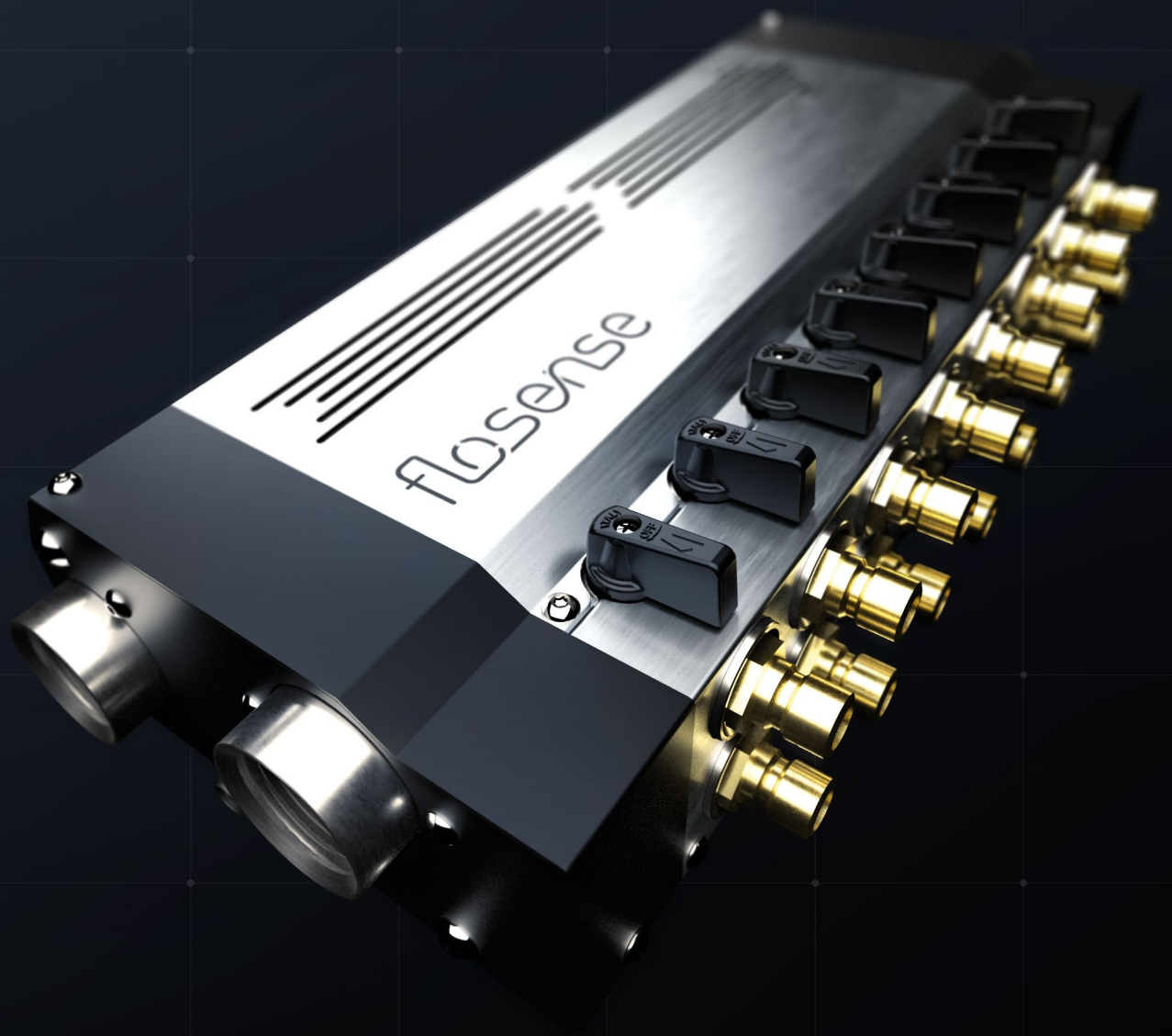


LET IT FLOW

quicker, cooler, faster...



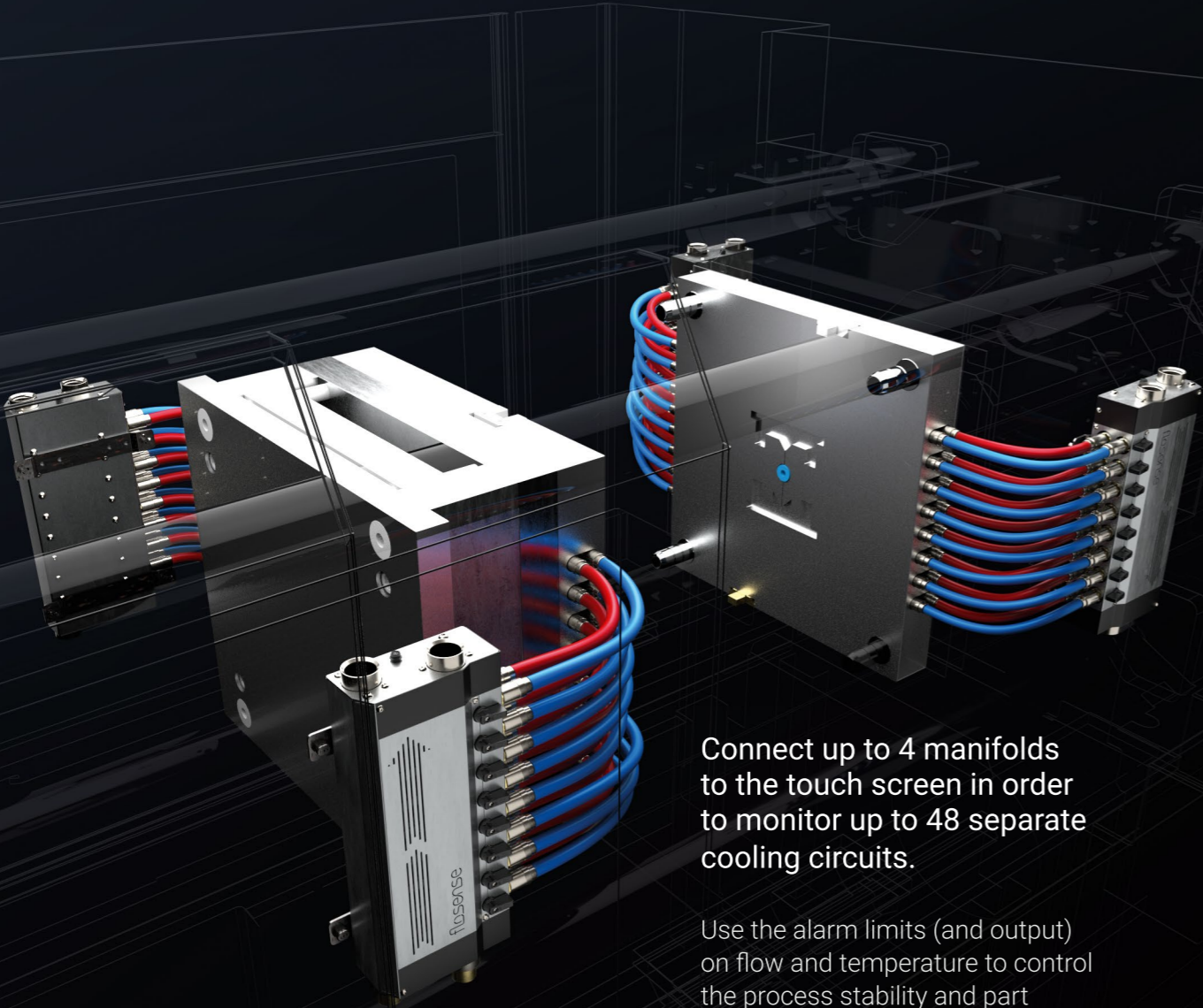
flosense[®] 4.0

DIGITAL FLOW MONITOR

MANIFOLD



Complete unit with Pressure sensor installed on main inlet / return.



Connect up to 4 manifolds to the touch screen in order to monitor up to 48 separate cooling circuits.

Use the alarm limits (and output) on flow and temperature to control the process stability and part quality.



TOUCH SCREEN

Upgrade your moulding machine with new digital flow manifold and improve your productivity.

Replacing traditional analogue manual flow regulators with new digital flow manifold will give you many advantages such as:

- Digital monitoring of Flow, Temperature and Pressure
- Alarm Output
- Higher flow capacity
- Higher temperature range
- Data storage and export
- Faster Mould changeovers
- OPC-UA / Euromap interface /

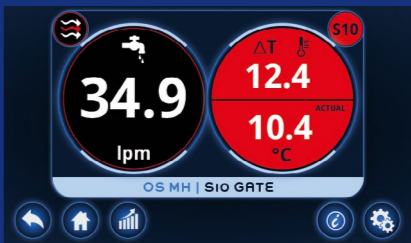
Touch Screen with 4 manifold inputs. With magnetic bracket for easy installation. Equipped with power, alarm, USB and Ethernet connections.



The main screen will show all circuits with information about flow and temperature. The main inlet and outlet will also show including pressure.



Data is stored in the internal memory and can be displayed in graphical view for each circuit. Data can also be exported for external use.



By clicking on a specific circuit you will see detailed information, including delta T (heat transfer) of the specific channel. Also, turbulent flow indicator is included.





The system is equipped with Audit Log to keep track of all events including user ID tracer.

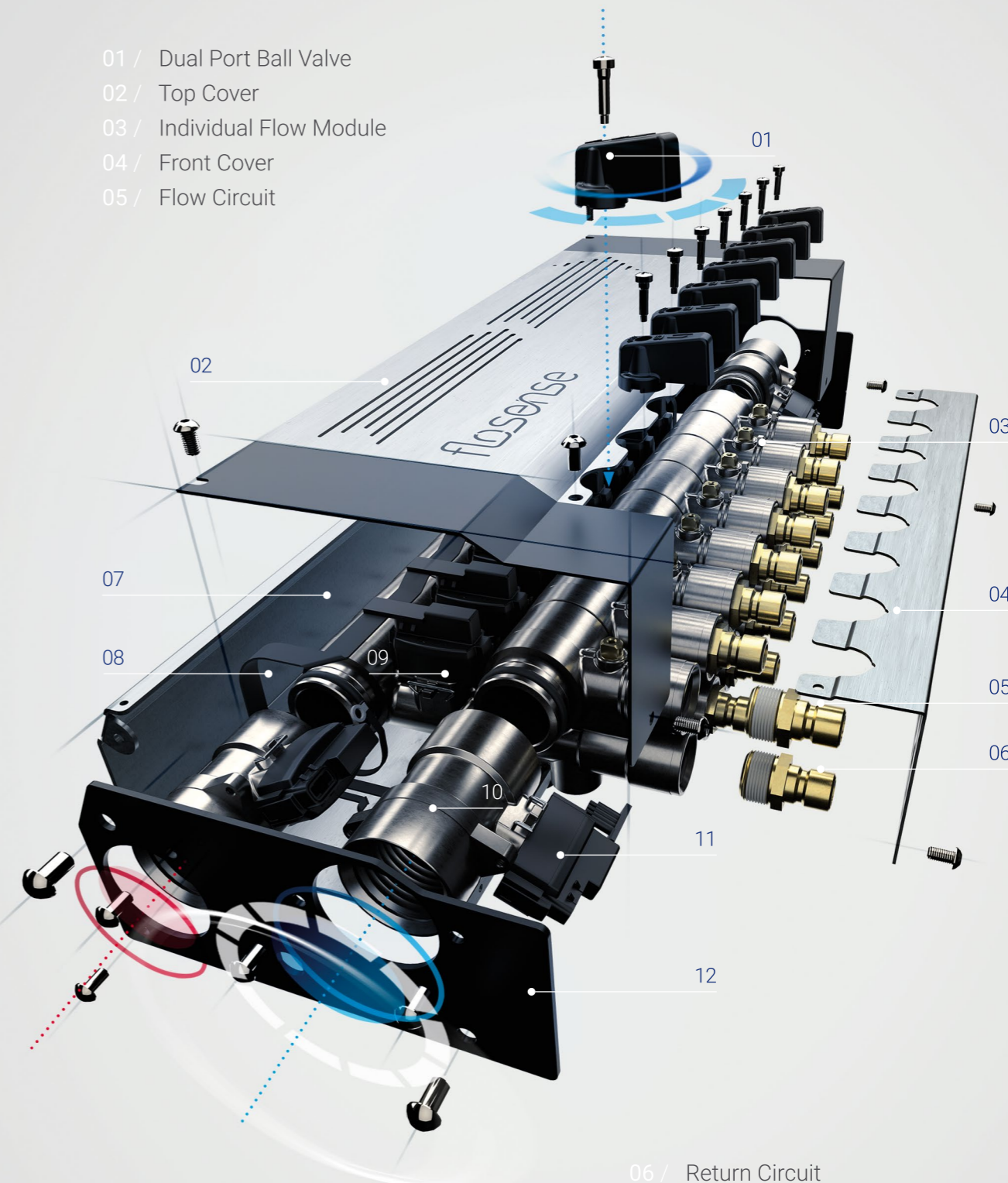
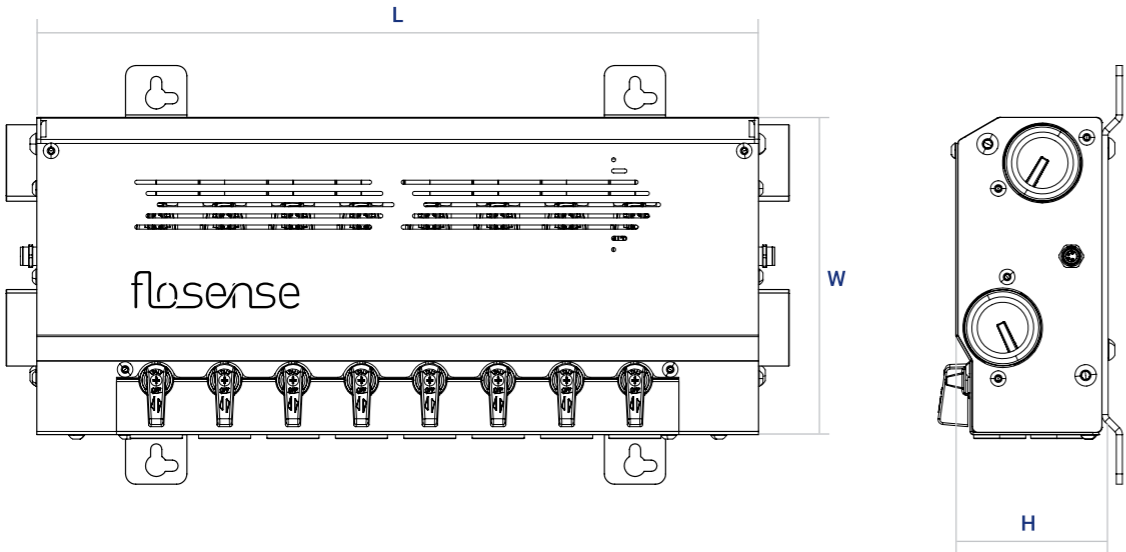
Size	Manifold inputs	Power Connection	Alarm Output	Interface
7,1"	4	12V	Yes	OPC-UA

CONSTRUCTION

Material:
Flow modules: DZR Brass / nickel plated /
Cover: stainless steel

PART NO.	Ports	Length / mm /	Width / mm /	Height / mm /		
F4M4-1-20	4	220	155	72	1-20 l/m	120°C
F4M4-2-40	4	220	155	72	2-40 l/m	120°C
F4M4HT-1-20	4	220	155	72	1-20 l/m	160°C
F4M4HT-2-40	4	220	155	72	2-40 l/m	160°C
F4M6-1-20	6	287	155	72	1-20 l/m	120°C
F4M6-2-40	6	287	155	72	2-40 l/m	120°C
F4M6HT-1-20	6	287	155	72	1-20 l/m	160°C
F4M6HT-2-40	6	287	155	72	2-40 l/m	160°C
F4M8-1-20	8	354	155	72	1-20 l/m	120°C
F4M8-2-40	8	354	155	72	2-40 l/m	120°C
F4M8HT-1-20	8	354	155	72	1-20 l/m	160°C
F4M8HT-2-40	8	354	155	72	2-40 l/m	160°C
F4M10-1-20	10	421	155	72	1-20 l/m	120°C
F4M10-2-40	10	421	155	72	2-40 l/m	120°C
F4M10HT-1-20	10	421	155	72	1-20 l/m	160°C
F4M10HT-2-40	10	421	155	72	2-40 l/m	160°C
F4M12-1-20	12	488	155	72	1-20 l/m	120°C
F4M12-2-40	12	488	155	72	2-40 l/m	120°C
F4M12HT-1-20	12	488	155	72	1-20 l/m	160°C
F4M12HT-2-40	12	488	155	72	2-40 l/m	160°C

HT - High temperature



- 06 / Return Circuit
- 07 / Base Frame
- 08 / Cable
- 09 / Flow / Temperature Sensor
- 10 / End Module
- 11 / Pressure / Temperature Sensor
- 12 / End Plate

ACCESSORIES

Manifold / Extension cable

PART NO.	Connection	Length (mm)
FS-3P-EC1000	M8/M8/3P	1000
FS-3P-EC2000	M8/M8/3P	2000
FS-3P-EC5000	M8/M8/3P	5000
FS-3P-EC10000	M8/M8/3P	10000



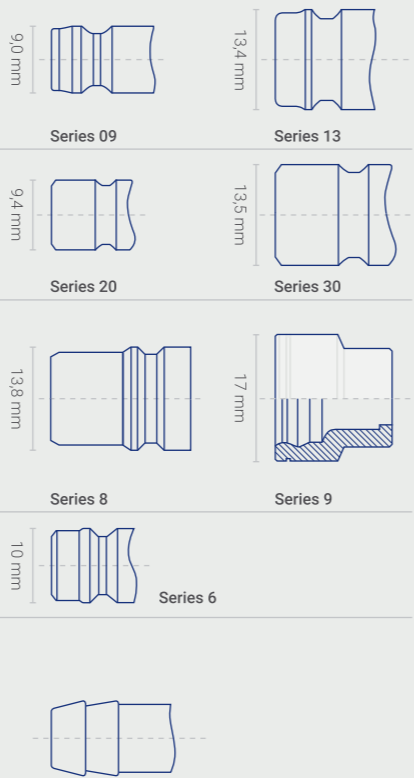
Blanking Plug

PART NO.	Connection	Seal
SSEC1	1" BSPP	FKM



Port Connector Plugs

PART NO.	Connection	Size/Series
09NRF	R 1/2"	09 EURO Style
13NRF	R 1/2"	13 EURO Style
20NRF	R 1/2"	20 Int. Style
30NRF	R 1/2"	30 Int. Style
08NRF	R 1/2"	French Type Style
F9NRF	R 1/2"	French Matic Style
06NRF	R 1/2"	06 Scandinavian Style
10MF	R 1/2"	10 mm Hosetail
13MF	R 1/2"	13 mm Hosetail
25MF	R 1"	25 mm Hosetail
38MF	R 1"	38 mm Hosetail



SPECIFICATION

MATERIALS	
Modules	Nickel Plated DZR Brass (Corrosion resistant)
Main Feed	R1"
Circuits	R1/2"
Cover	Stainless Steel
DISPLAY	
Type	Touch
Size	7,1"
Voltage	12-24 Volt.
Data	USB + Ethernet
Communications	OPC UA
Internal memory	Up to 30 days data (FIFO)



FLOW	Standard Sensor	HT Sensor
Measuring range	1-20 l/min (0,27-5,2 gpm) 2-40 l/min (0,53-10,4 gpm)	1-20 l/min (0,27-5,2 gpm) 2-40 l/min (0,53-10,4 gpm)
Accuracy	(± 1 σ) in water, ± 1 % FS	(± 1 σ) in water, ± 1 % FS
TEMPERATURE		
Measuring range	0-120 °C (32-248 °F)	0-160°C (32-320°F)
Accuracy	15-90 °C (59-194 °F) ± 0.5 K 0-120 °C (32-248 °F) ± 1 K	15-90 °C (59-194 °F) ± 0.5 K 0-120 °C (32-248 °F) ± 1 K 120-160 °C (248-320 °F) ± 2 K
PRESSURE		
Measuring range	0-10 bar (0-145 psig)	
Accuracy	± 2.5 % FS	





Distributor

MOULDPRO APS

Baltorpbakken 10
DK-2750 Ballerup, Denmark
Phone: **+45 7020 3131**

www.mouldpro.com